

REVERSE ENGINEERING SERVICES

DOCAN's reverse engineering services help clients make well-informed decisions on the manufacturing of new or improved equipment, components or systems.

CORE CAPABILITIES:

- ✓ Advanced surveying techniques
- ✓ Material identification & NDT
- ✓ Engineering calculations
- ✓ Design code assessments
- ✓ Fitness for Service Assessments
- ✓ 2D & 3D CAD creation

 INFO@DOCANCO.COM

 +44 (0) 1606 212330

 DOCANCO.COM

LEARN MORE



HOW WE CAN HELP

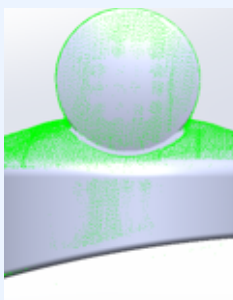
Whether you're looking to duplicate an existing structure, manufacture compatible components or benchmark a new design against an existing one, our reverse engineering services can prove an invaluable resource.

Using industry-led reverse engineering techniques combined with a deep understanding of engineering processes, we can effectively obtain accurate details and provide verified manufacture drawings for any asset.

We tailor our approach to align with our clients' needs, whether it involves serving as an independent engineering resource delivering high-level design, analysis, and assessment services, or offering complete turnkey project solutions.

KEY PROJECTS

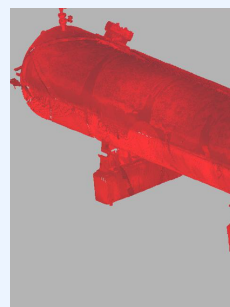
MANUFACTURING DRAWINGS



MANUFACTURING

- ✓ Metrological grade 3D scans produced of each component
- ✓ Handheld measurement equipment used to determine nominal dimensions and tolerances
- ✓ Produced accurate dimensional drawings of parts with complex curvature and features

NITROGEN PRESSURE VESSEL



MANUFACTURING

- ✓ Producing an engineering documentation pack for a pressure vessel with no existing information
- ✓ Completed surveying and measurement to characterise main vessel features
- ✓ Produced engineering calculations and GA drawing of as-built condition