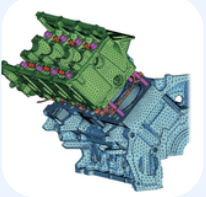


# KEY DISCIPLINES

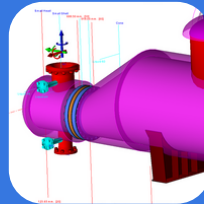
DOCAN's team of advanced engineering consultants offer a versatile range of expertise across many disciplines.

## MECHANICAL SYSTEMS



- General Machinery and Systems
- Fixed Equipment
- Rotating Equipment
- and more...**

## PIPING & PRESSURE SYSTEMS



- All aspects of Piping & Vessels Engineering
- Pipe Stress Analysis and FEA for vessels
- Fitness For Service Assessments
- and more...**

## PROCESS ENGINEERING



- Process Pre-FEED, FEED, and Design
- Process Hazard & Safety Systems
- Computational modelling & CFD
- and more...**

## FIELD SERVICES



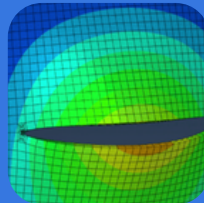
- Reverse Engineering & Digital Twin services
- Condition monitoring
- 3D Laser Scanning & Surveying
- and more...**

## CIVIL & STRUCTURAL ENGINEERING



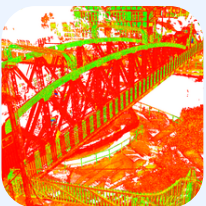
- R&D, FEED, Detailed Design, Retrofits
- Structural Dynamics
- Post Damage Assessment and Decommissioning
- and more...**

## FITNESS FOR SERVICE ASSESSMENTS



- Codified methods through to fully non-linear FEA
- All aspects of API 579
- BS 7910 for crack like defects
- All service conditions including Hydrogen service & high temperature applications
- and more...**

## SIMULATION & ANALYSIS



- Finite Element Analysis
- Computational Fluid Dynamics (1D & 3D)
- Pipe Stress Analysis (PSA)
- 1D systems & network analysis
- Rotating Equipment
- and more...**

## R&D



- Commercial feasibility studies
- Developing initial design concepts
- Validation of design concepts
- Managing testing activities
- and more...**

## KEY CONTACTS



[INFO@DOCANCO.COM](mailto:INFO@DOCANCO.COM)



+44 (0) 1606 212330



[DOCANCO.COM](http://DOCANCO.COM)

## LEARN MORE



# ABOUT DOCAN

DOCAN are a global engineering consultancy driven by a team of highly experienced engineers, designers and consultants. Our specialities lie in the application of advanced engineering and working within most highly regulated industries.

## **INNOVATIVE SOLUTIONS**

Solving highly complex engineering challenges and providing value to our client's projects are the foundations upon which DOCAN was built. Our consultancy services cover all elements of analysis, design, simulation and assessment, employing innovative solutions that ultimately achieve goals.

## **MULTI-DISCIPLINARY ENGINEERS**

We're a multidisciplinary consultancy with a transferrable skillset at our client's disposal, who can facilitate our knowledge throughout the entire lifecycle of their project or seek our versatile expertise in cases where they lack the in-house skills or resources.

## **CLIENT-FOCUSED**

We pride ourselves on our can-do attitude and client-centred approach, combined with an unrivalled ability to solve even the most intricate engineering problems. Our goal is to save our clients time and money, delivering a solution that serves their needs and gets the job done.

## **KEY CONTACTS**

 [INFO@DOCANCO.COM](mailto:INFO@DOCANCO.COM)

 +44 (0) 1606 212330

 [DOCANCO.COM](http://DOCANCO.COM)

**LEARN MORE**

